

September 22, 2020

Facilities + Infrastructure



Community Session #4

AGENDA

- The Emerging Plan
- Facilities + Infrastructure Recommendations
- Priorities
- Next steps



VISION + GOALS



bicycling the gin safety youth activities
business traffic
downtown planning jobs
thcare nment **schools** events walking library
dustry
more apartments cultural facilities
rism parks & recreation sports
neighborhood revitalization empty stores
affordable housing

Project Prattville 2040
Plan Survey 1

1. How do you rate your overall quality of life in Prattville?

- Very Good
- Good
- Fair
- Unsatisfactory
- Very Unsatisfactory

0 of 17 answered

A screenshot of a survey interface. At the top left is the Project Prattville 2040 logo. Below it is the text "Plan Survey 1". The main question is "1. How do you rate your overall quality of life in Prattville?". There are five radio button options: "Very Good", "Good", "Fair", "Unsatisfactory", and "Very Unsatisfactory". At the bottom of the survey window, a green bar indicates "0 of 17 answered".

Survey #1: 870 responses

VISION + GOALS



Education

public schools, workforce development

Economy

business, industry, downtown, tourism

Recreation and Culture

parks, recreation, arts and culture

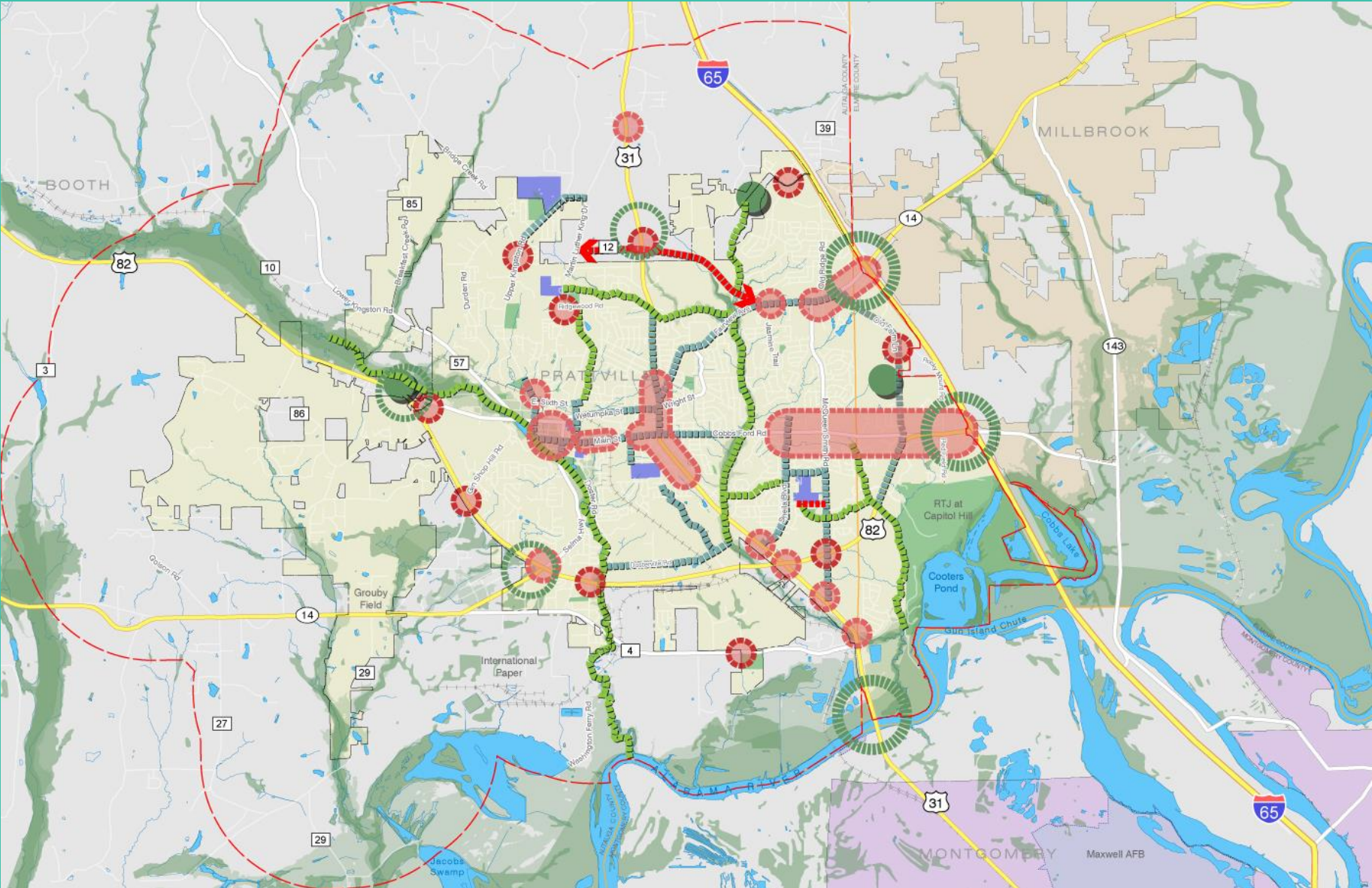
Infrastructure

water, sewer, vehicular, pedestrian and bicycle mobility

Enhancement

image, appearance, neighborhood revitalization

GROWTH STRATEGY



GROWTH STRATEGY



Community Image

gateways, major corridors, legibility, wayfinding

Activity Centers

mixed-use and business hubs and corridors, industrial areas

Infrastructure

vehicular, pedestrian, bicycle, water, sewer, telecom

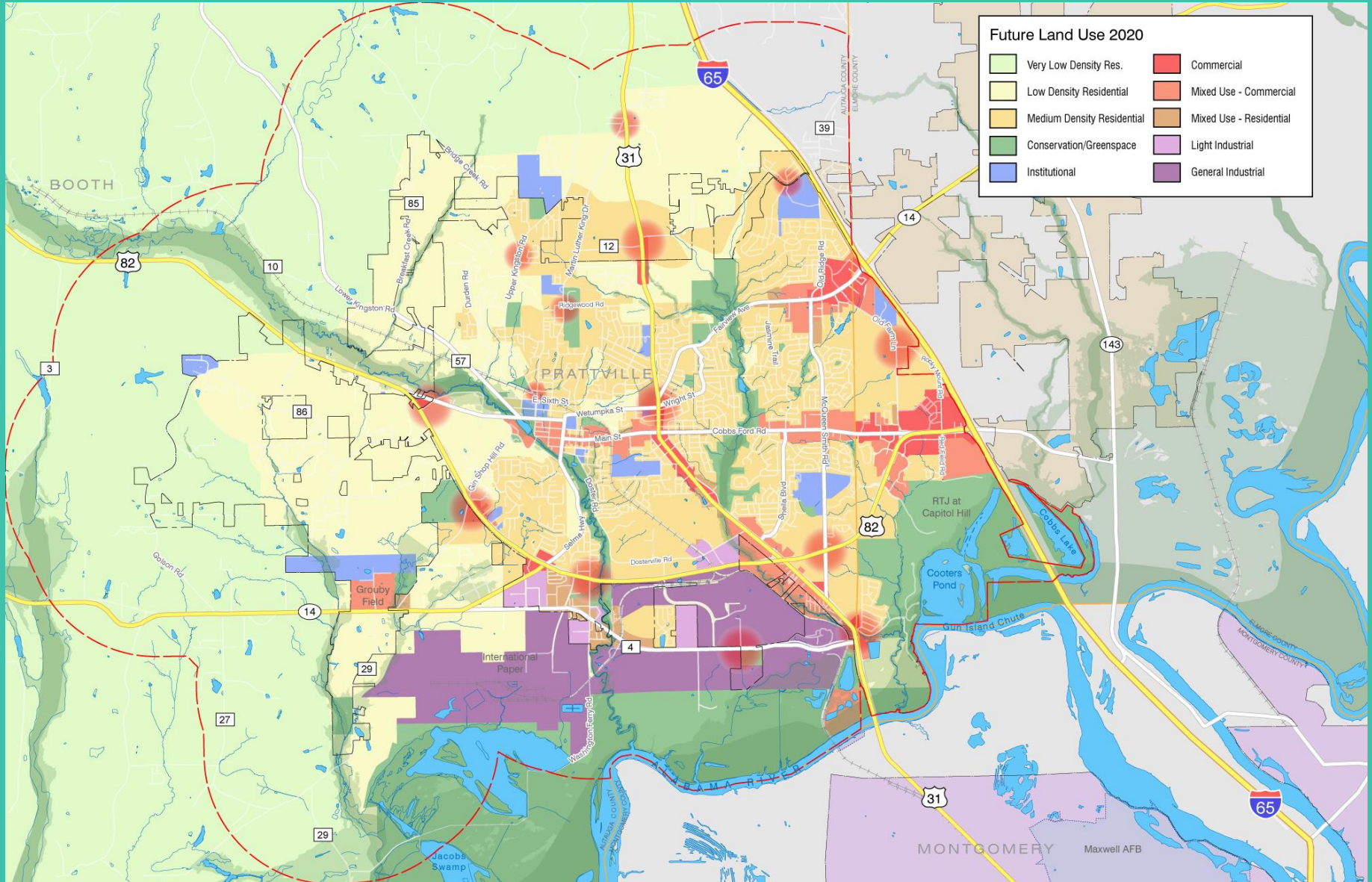
Green Infrastructure

river, creeks, steep slopes, stormwater, habitat

Neighborhoods

housing, revitalization, aging in place, design

LAND USE PLAN



DEVELOPMENT PREFERENCES



- Quality housing
- Conservation
- Housing for different life stages
- Walkable
- Bicycle-friendly
- Connectivity + traffic flow
- Diverse, well-distributed parks
- Historic charm

A screenshot of a survey question from Project Prattville 2040. The survey is titled "Plan Survey 1". The question is "1. How do you rate your overall quality of life in Prattville?". There are five radio button options: "Very Good", "Good", "Fair", "Unsatisfactory", and "Very Unsatisfactory". At the bottom of the survey form, it says "0 of 17 answered".

Project Prattville 2040

Plan Survey 1

1. How do you rate your overall quality of life in Prattville?

Very Good

Good

Fair

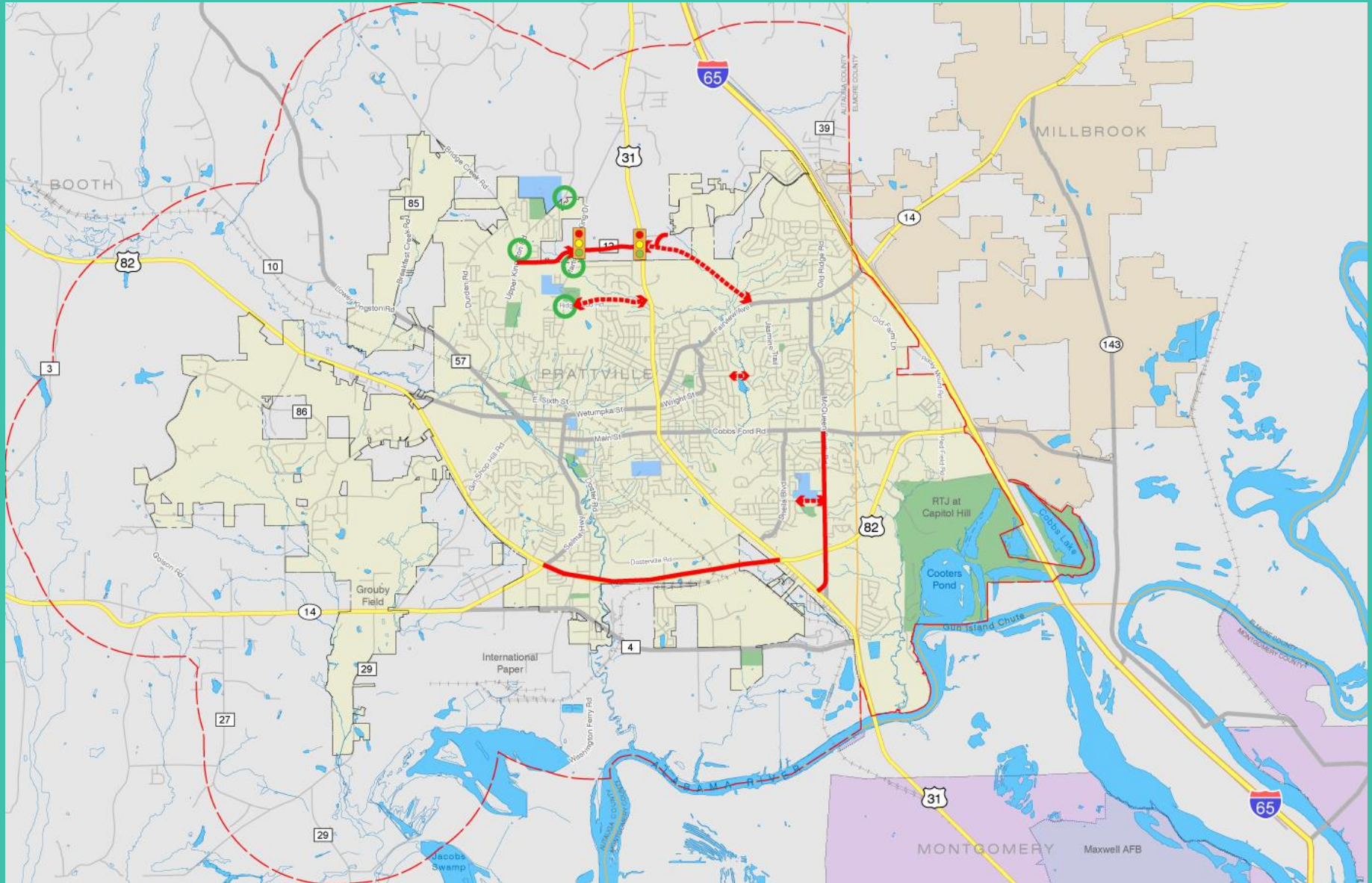
Unsatisfactory

Very Unsatisfactory

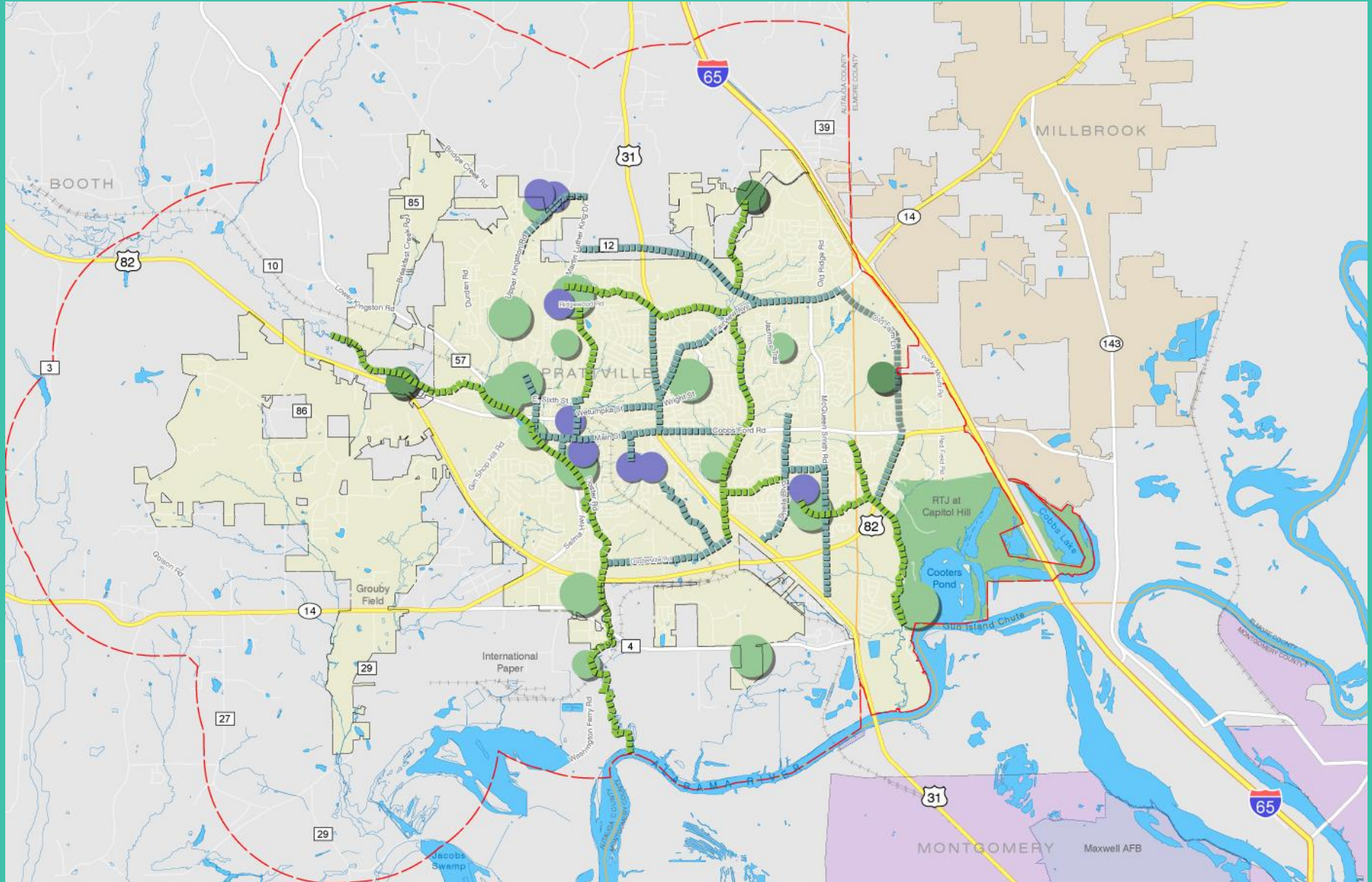
0 of 17 answered

Survey #2: 352 responses

TRANSPORTATION PLAN



BIKE-PED CONCEPT



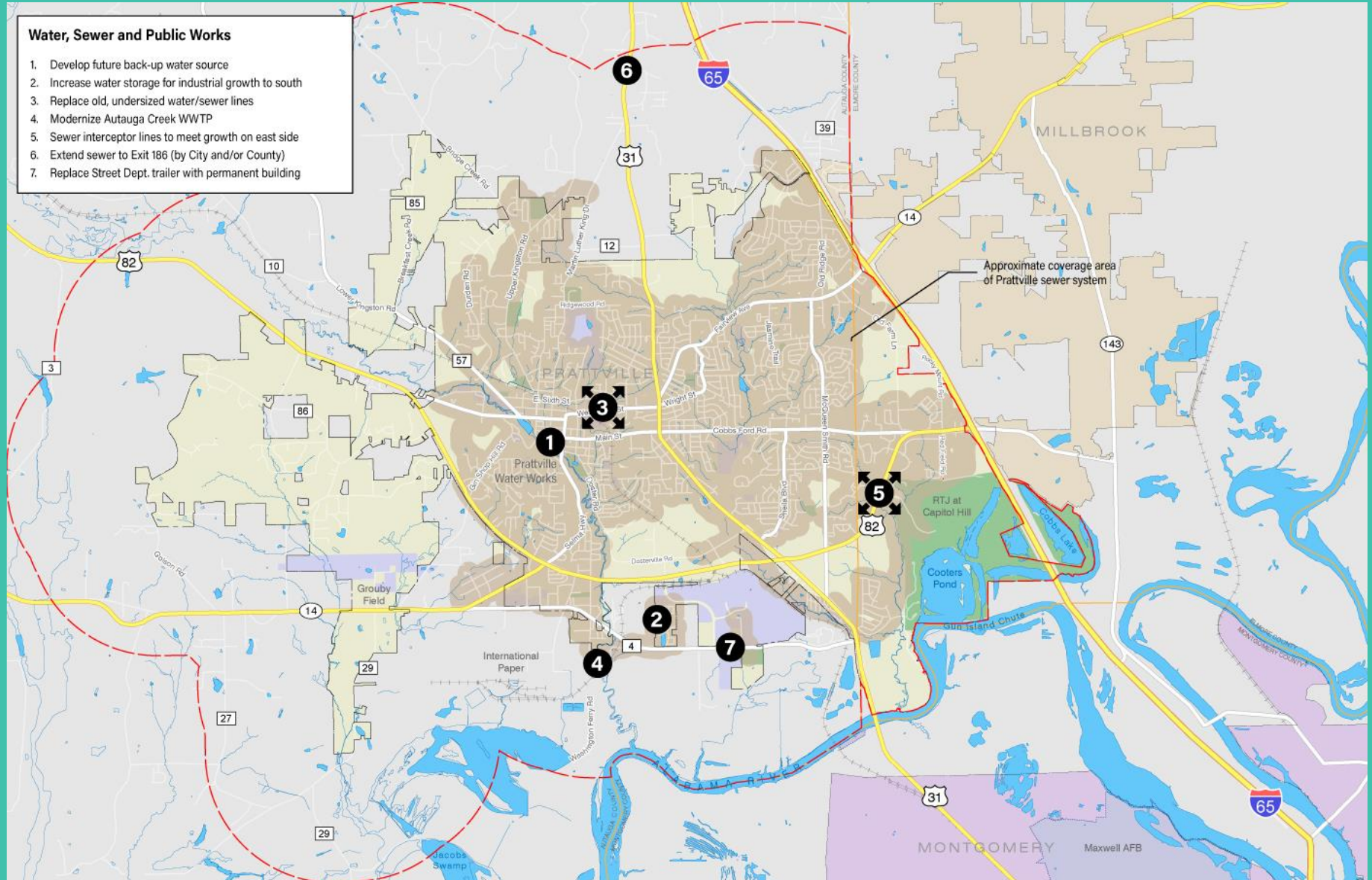
Water, Sewer and Public Works

1. Develop future back-up water source
2. Increase water storage for industrial growth to south
3. Replace old, undersized water/sewer lines
4. Modernize Autauga Creek WWTP
5. Sewer interceptor lines to meet growth on east side
6. Extend sewer to Exit 186 (City and/or County)
7. Replace Street Dept. trailer with permanent building

WATER, SEWER + PUBLIC WORKS

Water, Sewer and Public Works

1. Develop future back-up water source
2. Increase water storage for industrial growth to south
3. Replace old, undersized water/sewer lines
4. Modernize Autauga Creek WWTP
5. Sewer interceptor lines to meet growth on east side
6. Extend sewer to Exit 186 (by City and/or County)
7. Replace Street Dept. trailer with permanent building



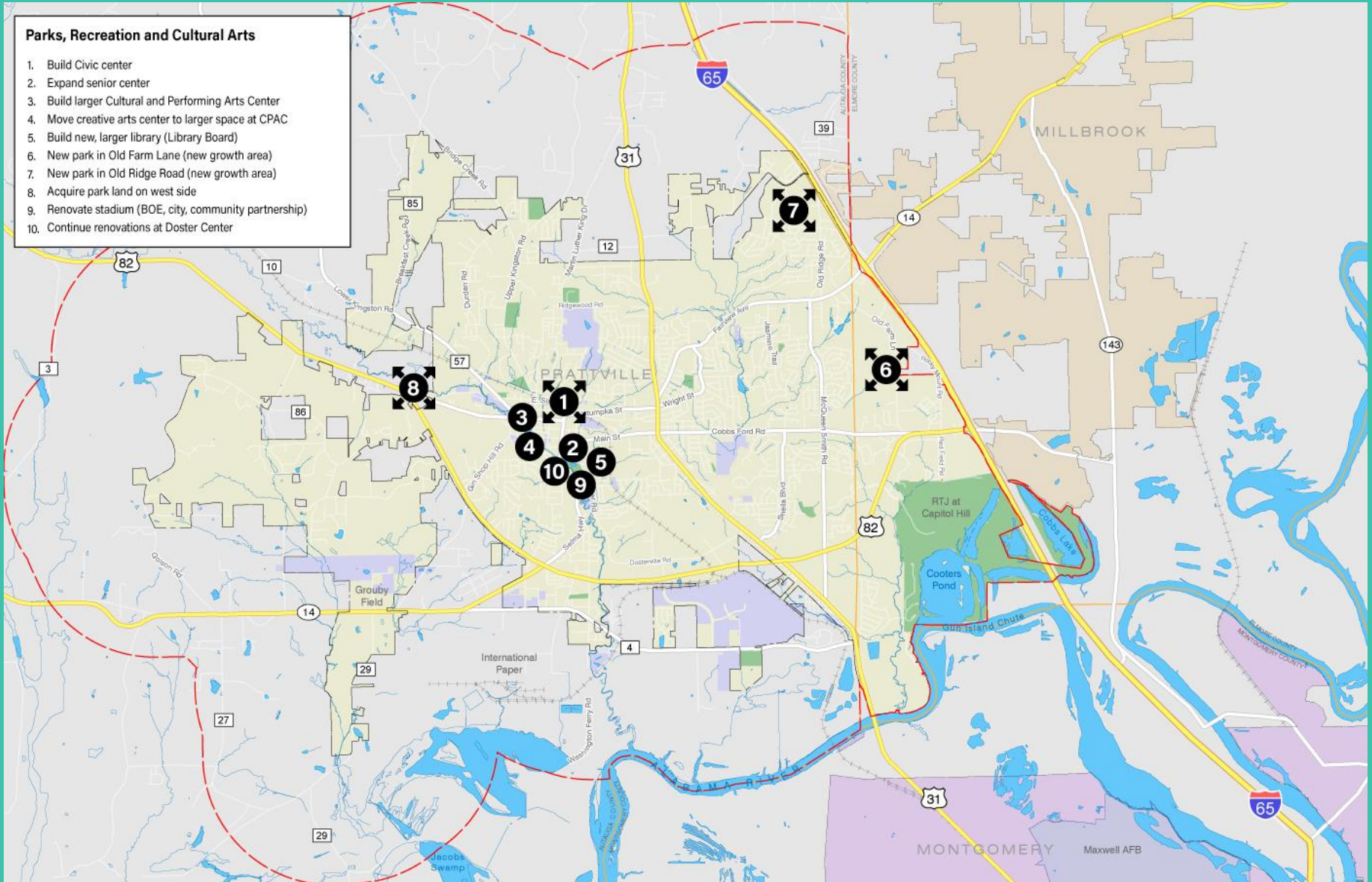
Parks, Recreation and Cultural Arts

1. Build Civic center
2. Expand senior center
3. Build larger Cultural and Performing Arts Center
4. Move creative arts center to larger space at CPAC
5. Build new, larger library (Library Board)
6. New park in Old Farm Lane (new growth area)
7. New park in Old Ridge Road (new growth area)
8. Acquire park land on west side
9. Renovate stadium (BOE, city, community partnership)
10. Continue renovations at Doster Center

PARKS, RECREATION + CULTURAL

Parks, Recreation and Cultural Arts

1. Build Civic center
2. Expand senior center
3. Build larger Cultural and Performing Arts Center
4. Move creative arts center to larger space at CPAC
5. Build new, larger library (Library Board)
6. New park in Old Farm Lane (new growth area)
7. New park in Old Ridge Road (new growth area)
8. Acquire park land on west side
9. Renovate stadium (BOE, city, community partnership)
10. Continue renovations at Doster Center



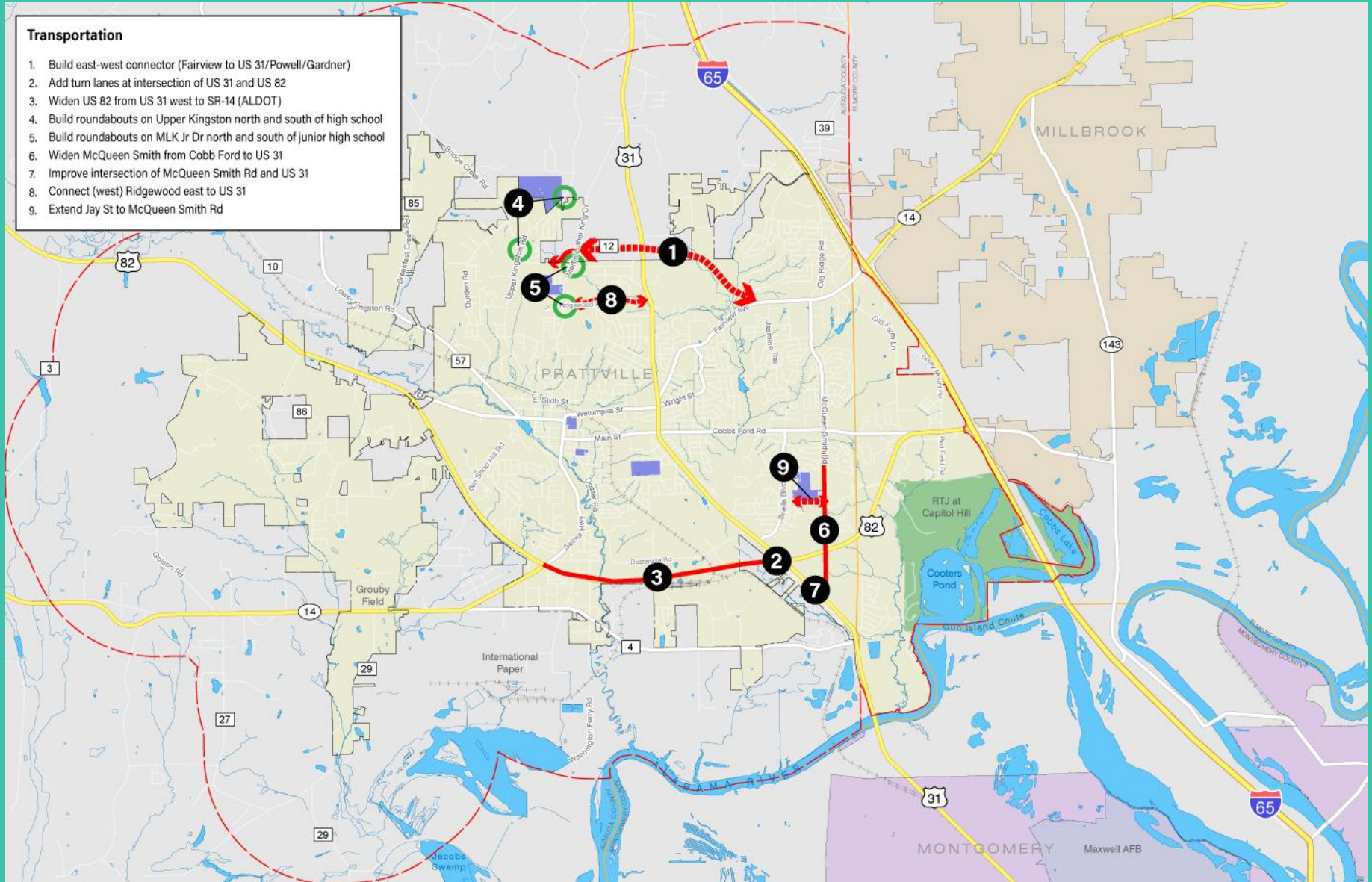
Transportation

1. Build east-west connector (Fairview to US 31/Powell/Gardner)
2. Add turn lanes at intersection of US 31 and US 82
3. Widen US 82 from US 31 west to SR-14 (ALDOT)
4. Build roundabouts on Upper Kingston north and south of high school
5. Build roundabouts on MLK Jr Dr north and south of junior high school
6. Widen McQueen Smith from Cobb Ford to US 31
7. Improve intersection of McQueen Smith Rd and US 31
8. Connect (west) Ridgewood east to US 31
9. Extend Jay St to McQueen Smith Rd

TRANSPORTATION

Transportation

1. Build east-west connector (Fairview to US 31/Powell/Gardner)
2. Add turn lanes at intersection of US 31 and US 82
3. Widen US 82 from US 31 west to SR-14 (ALDOT)
4. Build roundabouts on Upper Kingston north and south of high school
5. Build roundabouts on MLK Jr Dr north and south of junior high school
6. Widen McQueen Smith from Cobb Ford to US 31
7. Improve intersection of McQueen Smith Rd and US 31
8. Connect (west) Ridgewood east to US 31
9. Extend Jay St to McQueen Smith Rd



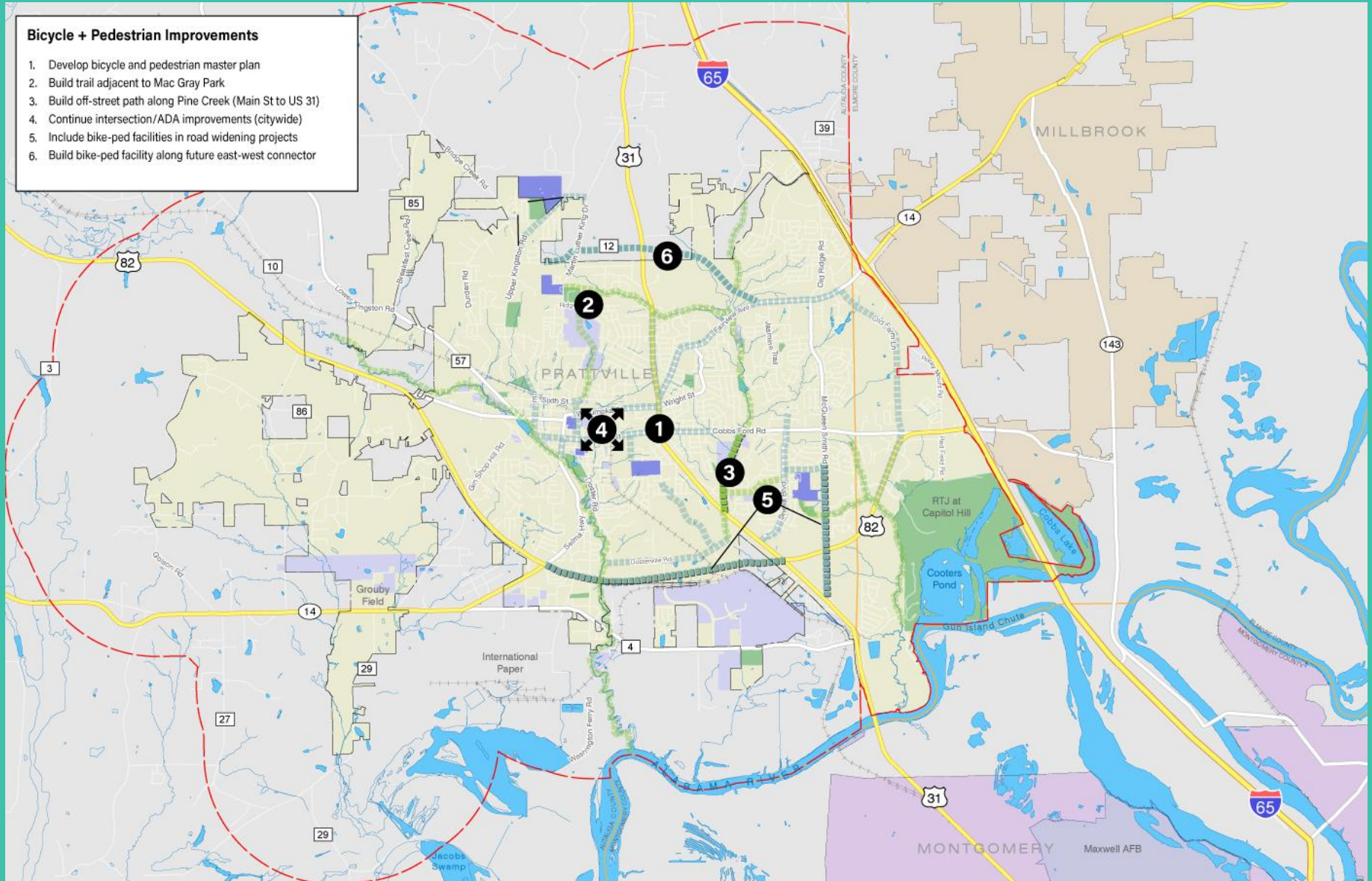
Bicycle and Pedestrian

1. Develop bicycle and pedestrian master plan
2. Build trail adjacent to Mac Gray Park
3. Build off-street path along Pine Creek (Main St to US 31)
4. Continue intersection/ADA improvements
5. Include bike-ped facilities in road widening projects
6. Build bike-ped facility along future east-west connector

BICYCLE + PEDESTRIAN

Bicycle + Pedestrian Improvements

1. Develop bicycle and pedestrian master plan
2. Build trail adjacent to Mac Gray Park
3. Build off-street path along Pine Creek (Main St to US 31)
4. Continue intersection/ADA improvements (citywide)
5. Include bike-ped facilities in road widening projects
6. Build bike-ped facility along future east-west connector



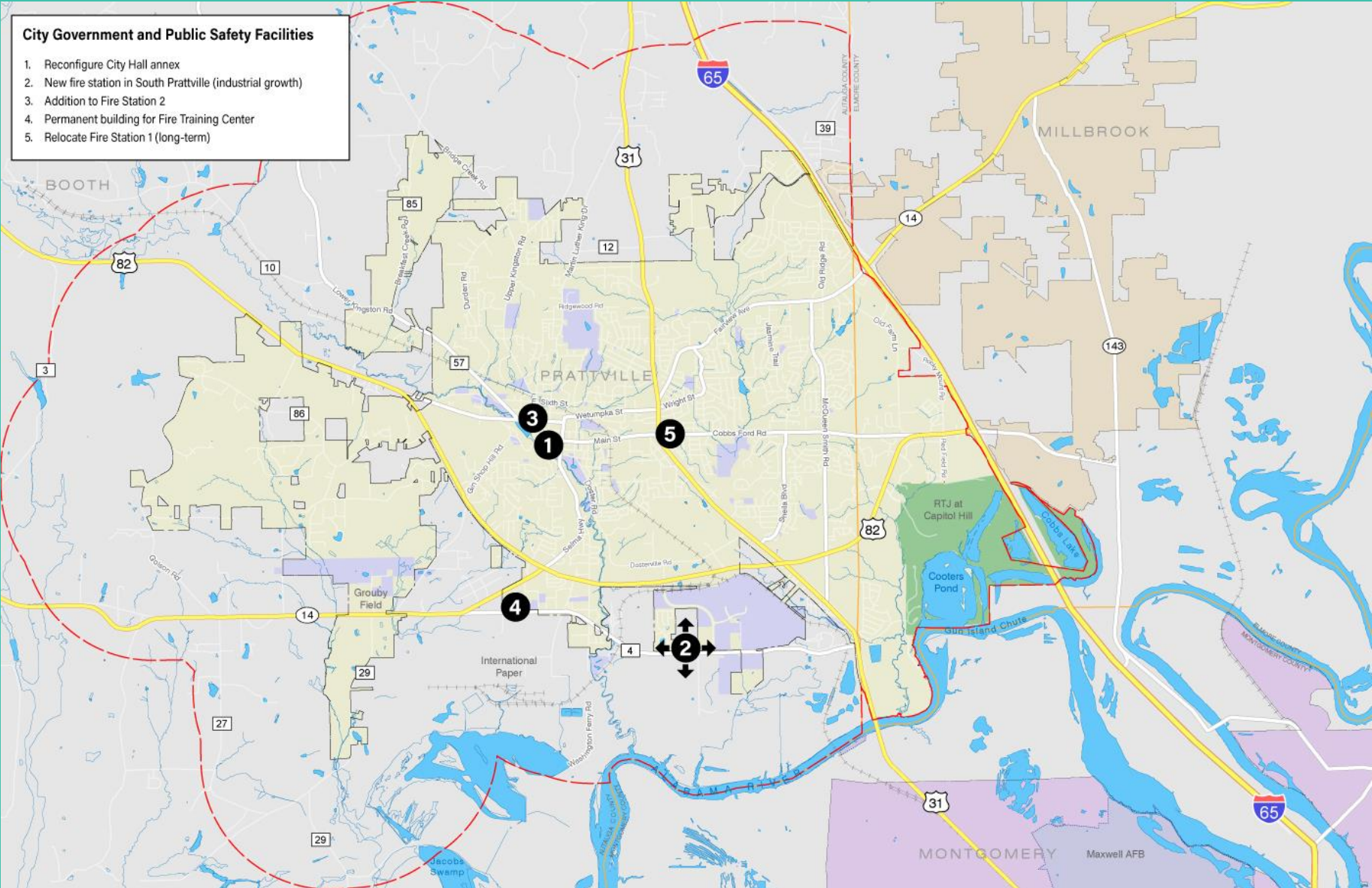
Government + Public Safety Facilities

1. Reconfigure City Hall annex to optimize space use
2. New fire station in South Prattville (industrial growth)
3. Addition to Fire Station 2
4. Permanent building for Fire Training Center
5. Relocate Fire Station 1 for more parking, access

CITY GOV'T + PUBLIC SAFETY

City Government and Public Safety Facilities

- 1. Reconfigure City Hall annex
- 2. New fire station in South Prattville (industrial growth)
- 3. Addition to Fire Station 2
- 4. Permanent building for Fire Training Center
- 5. Relocate Fire Station 1 (long-term)



PRIORITIES SURVEY



Survey #3 Facilities + Infrastructure Priorities

Online tomorrow September 23!

Look for link on
projectprattville.com

A screenshot of a survey question on a mobile device. The survey is titled "Plan Survey 1" and features the "Project Prattville 2040" logo. The question is "1. How do you rate your overall quality of life in Prattville?". The response options are radio buttons for "Very Good", "Good", "Fair", "Unsatisfactory", and "Very Unsatisfactory". At the bottom of the survey, it indicates "0 of 17 answered".

Project
Prattville
2040

Plan Survey 1

1. How do you rate your overall quality of life in Prattville?

Very Good

Good

Fair

Unsatisfactory

Very Unsatisfactory

0 of 17 answered

www.surveymonkey.com/r/PrattvillePriorities

NEXT STEPS



- Infrastructure + Facilities
September-October
- Survey #3
September 23-October 23
- Implementation Strategy/Complete Plan Draft
November 6
- Final Plan Presentation
November 17
- Review + Adoption
December-January

September 22, 2020

Facilities + Infrastructure



Thanks for your commitment to Prattville!